



SmartStart Bike

INSTRUCTION MANUAL

No. 1006
Ages: 1.5 - 3y
GB

DO NOT DISCARD: IMPORTANT LITERATURE. KEEP THESE INSTRUCTIONS FOR FUTURE REFERENCE. OBSERVE ALL SAFETY WARNINGS AND CAUTIONARY STATEMENTS TO REDUCE THE RISK OF SERIOUS OR FATAL INJURY.

WARNING:

TO AVOID SERIOUS INJURY: DO NOT use near cars or other motor vehicles, near streets, steps, stairwells, sloped driveways, hills, roadways, alleys, swimming pools or other bodies of water. Shoes must be worn at all times.

SAFETY INSTRUCTIONS

FALL HAZARD - Never use this product on any elevated surface, since child's movement may cause the product to tip over. Use only on a flat floor.

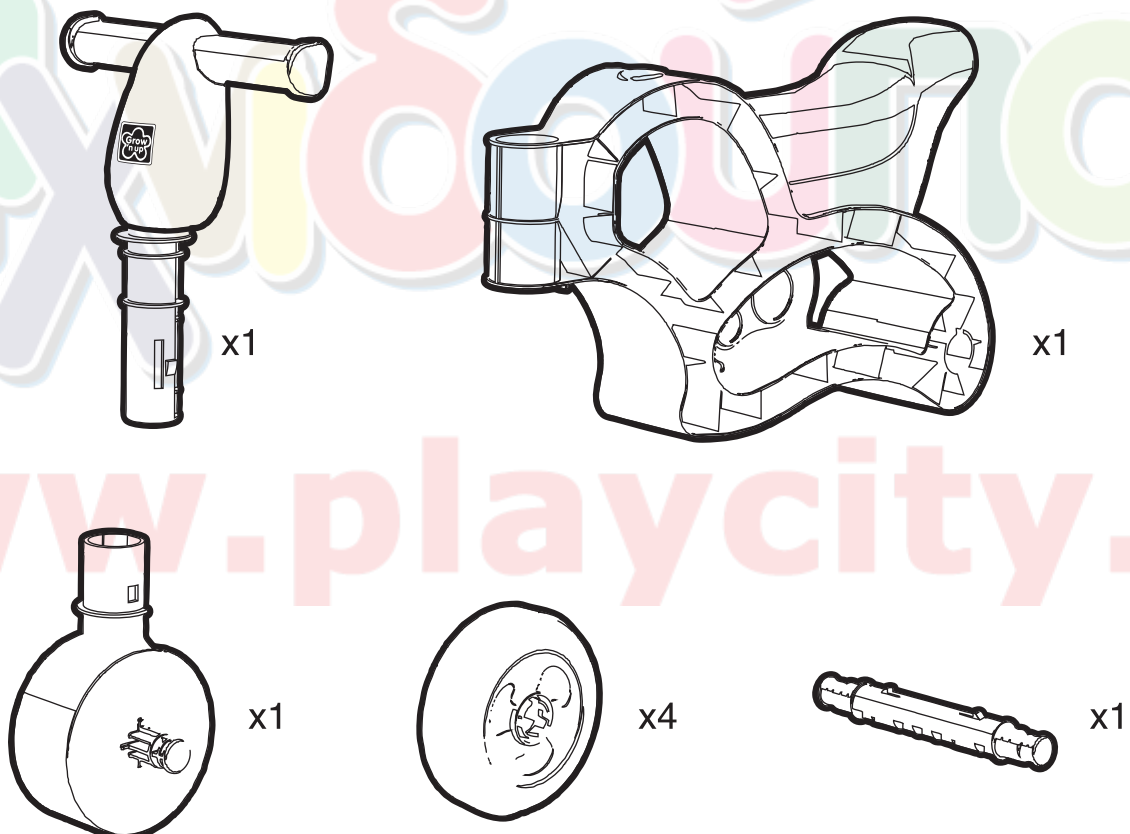
- This product is designed for normal residential use only, and is NOT intended for daycare or commercial use.
- Adult assembly required.
- Place this product on level ground not less than 6 feet (1.8 m) away from any structures or obstructions such as trees, fences, garages, houses, sheds, hedges, overhanging branches, laundry lines or electrical wires.
- On-site adult supervision is required for children of all ages at all times when on or around this product. Never leave children unattended.
- This product is intended for use by children ages 18 months - 3 years.
- Maximum weight limit: 44 lbs (20 kg). Limit 1 child at any time.

CAUTION: Observing the following statements and warnings to reduce the likelihood of serious or fatal injury.

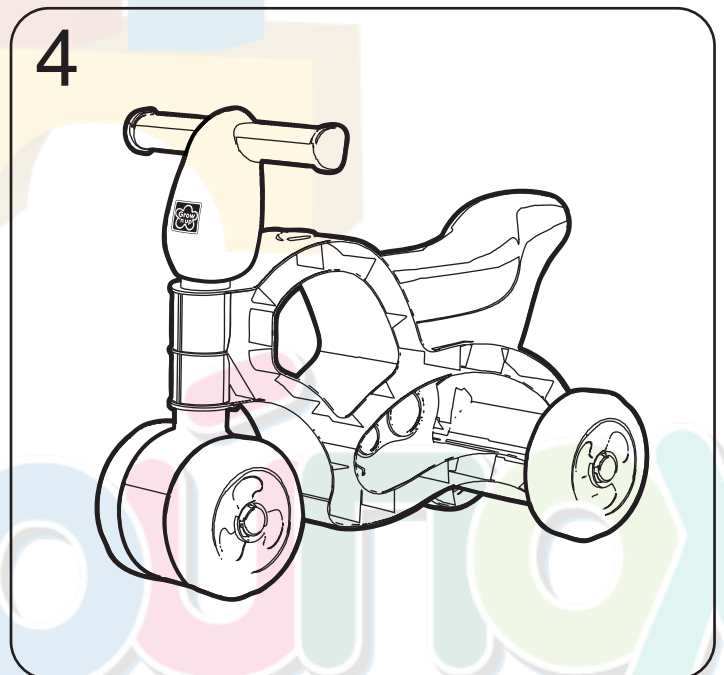
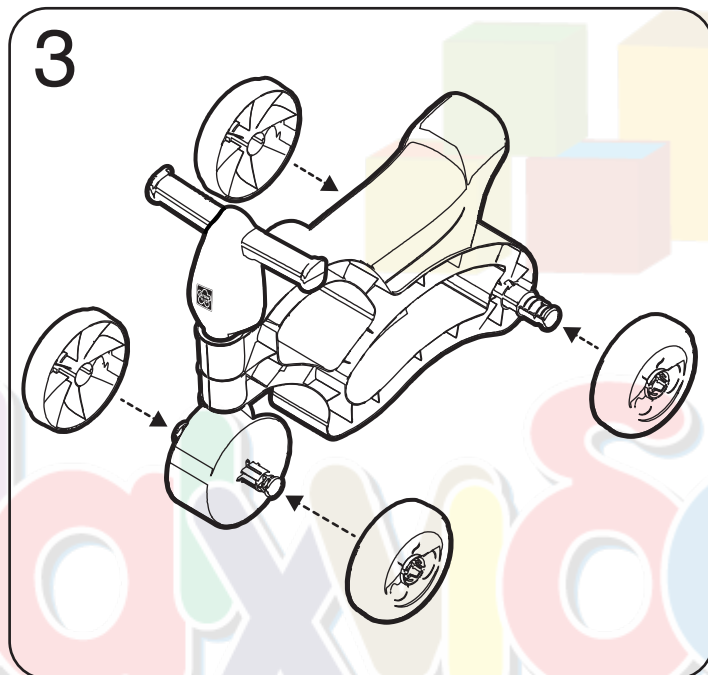
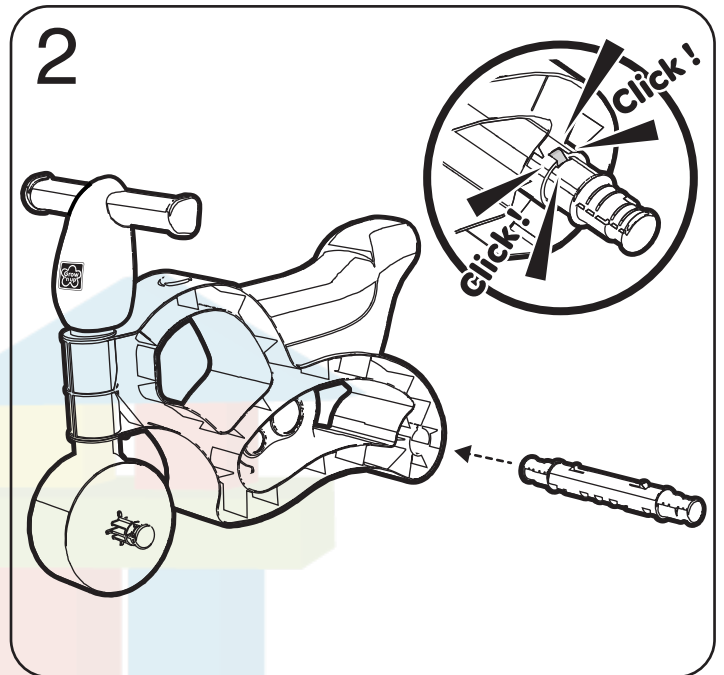
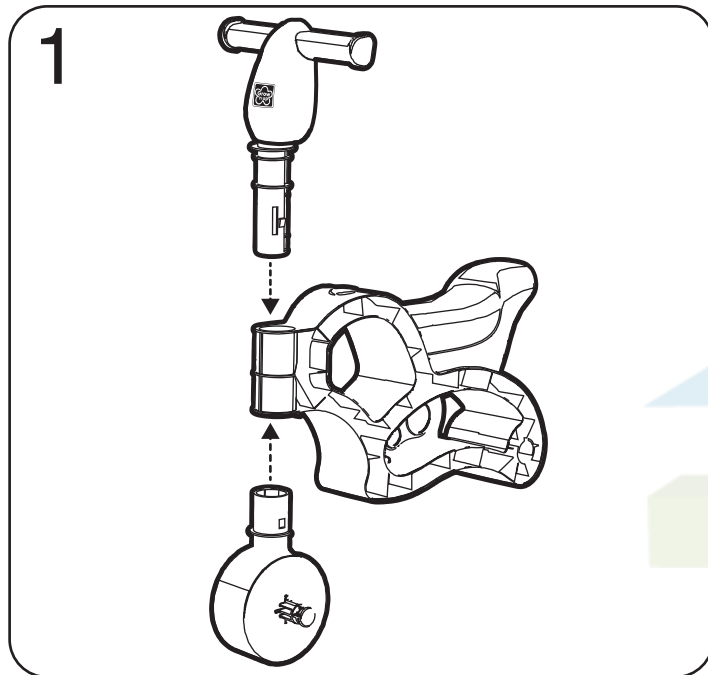
- DO NOT allow children to play on this product until it is completely installed.
- DO NOT allow children to stand on the bike.
- Dress children appropriately while on and around this product. Use well-fitting shoes that do not have slippery soles.
- DO NOT allow children to wear ponchos, scarves, hoods, jewelry, loose shoes, loose-fitting clothing, neckties, clothing with loose strings and/or clothing that might be potentially hazardous while using this product.
- Make sure all parts are securely snapped together before use.
- Toy should be used with caution since skill is required to avoid falls or collisions causing injury to the user or third parties.

PARTS

Notes: Illustrations not to scale.



ASSEMBLY:



SAFETY AND MAINTENANCE

1. Before use, please check that all parts are assembled securely.
2. Please check the product regularly for any worn out parts.
3. To clean this product, use a mild soap, water solution and clean cloth. Rinse clean with water to remove soap residue.
4. DO NOT leave the product in the rain. Keep dry always.
5. When temperature falls below 32°F/0°C, remove this product and store indoor. In extreme cold weather, plastic materials lose resilience and may become brittle and crack upon impact.